

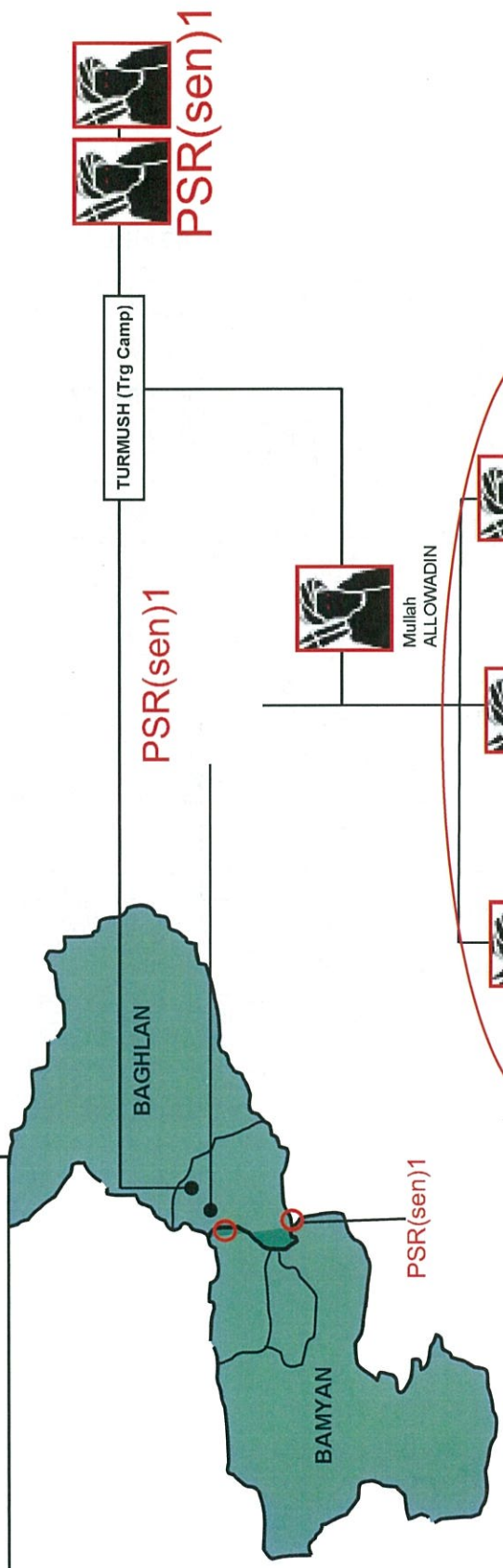
KT2 TIC 03 Aug 10

Update

Assessment as at 041300DAUG 10

- Leaders involved are Maulawi NEMATULLAH, KALTA, PSR(sen)1 with 12 or 15 other pers.
- Reported gp may still be planning to atk ISH PESTA CP night 4/5 AUG 10.
 - Gp likely to be currently located at KALTA's house in GARDENDEH PA'IN (MGRS 42S VD 14775 95151). Exact loc of house TBC.
 - House of PSR(sen)1 in i GARDENDEH PA'IN s a possible alt loc for KALTA and group.
 - KALTA may also have a house in DAHANE NAYAK (42S VD 2391). No imagery aval.
- KTs to conduct TSE afternoon 4 AUG 10.
- Possible involvement by PSR(sen)1 cannot be discounted.
- Second ('Southern Group') may be active IVO KHARZAR PASS (GR 42S VD 2675) under Qari MIRAJ. Possible intent to attack SHIBAR DC and target KT Patrols in S SHIBAR and SHIKARI.

Reported ORBAT of INS involved



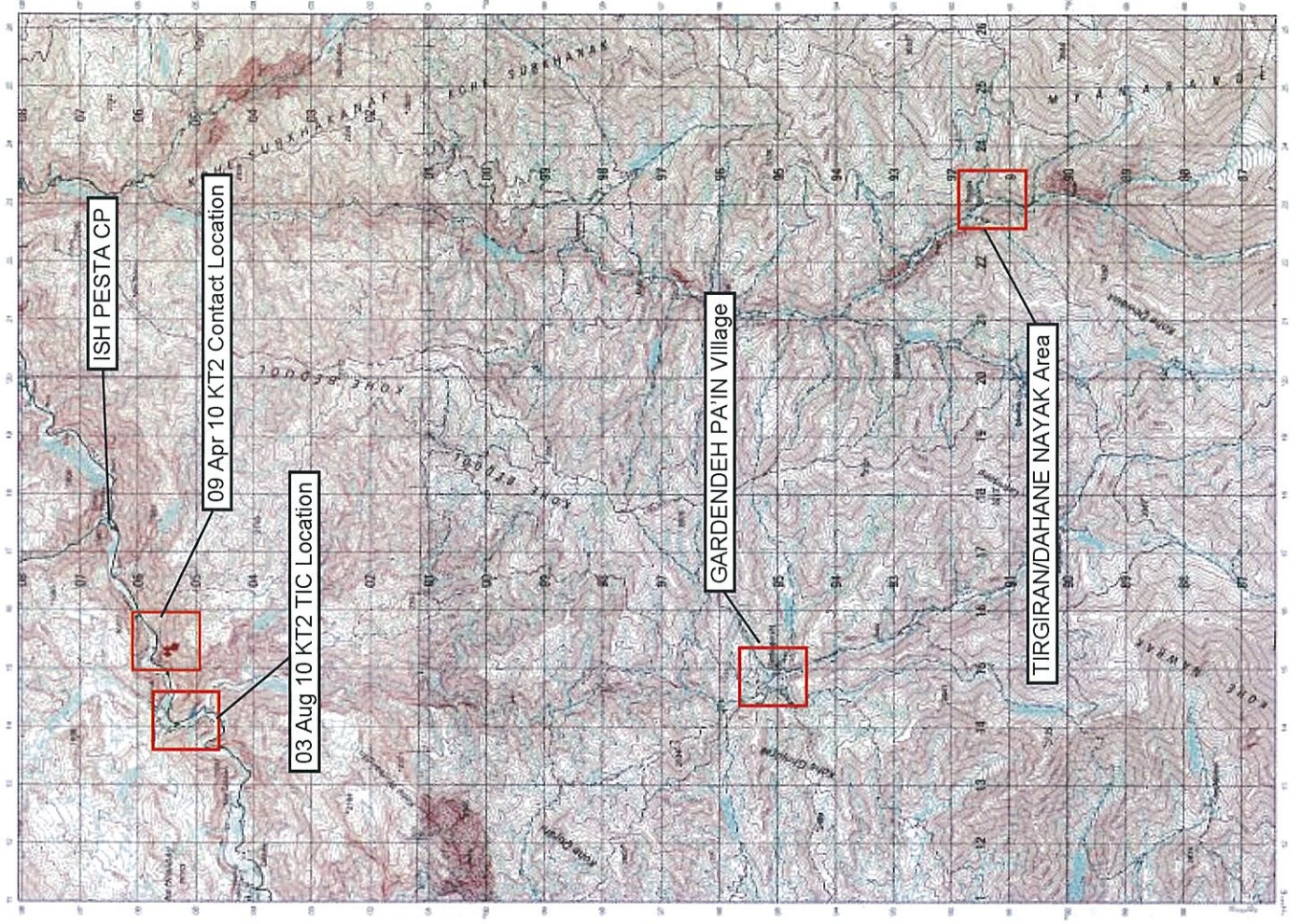
Initial investigation suggests this attack was perpetrated by 15 TB INS led by Maulawi NEHMATULLAH, PSR(sen)1 and Maulawi SHAFFIULLAH, PSR(sen)1. On 03 1400 Aug 10: SHAFFIULLAH told HA left PSR(sen)1 Tala Camp. PSR(sen)1 told INS PSR(sen)1 he was in POL-E KHUMRI CP PSR(sen)1 for PSR(sen)1 conference.

031615 Aug 10: PSR(sen)1 reported to PSR(sen)1 12 pers in high ground IVO KARIMAK.

Later he discounted report stating PSR(sen)1 related as it was a incident. Shura meeting ducted. PSR(sen)1 cannot locate

on: Possible ation by PSR(sen)1 .

Reference Map



TIRGIRAN

GARDEDEH PA'IN

PSR(S)1

This slide contains imagery of the area described in the heading. It has been redacted because it is derived from partner platforms

A/S2 Comment: Locs of Eny Posns still to be confirmed and possible overwatch/early warning posn

DO ABE Village

1706hrs Second posn reported
42S VE 14249 05028

1701hrs Original posn reported
42S VE 1417 0505

Dir of Travel

Poss INS Exfil Routes 
Poss INS Posn 
Foot Tracks 

ISH PESTA CP

NZPRT S2 Cell

Overview of Contact Area

ISAF-SECRET

While all care has been taken in the making of this product S2 Cell accepts no responsibility for any inaccuracies contained herein.

↓ N PSR(S)1

This slide contains imagery of the area described in the heading. It has been redacted because it is derived from partner platforms

Poss Loc of IED
Approx 42S VE 14264 04922

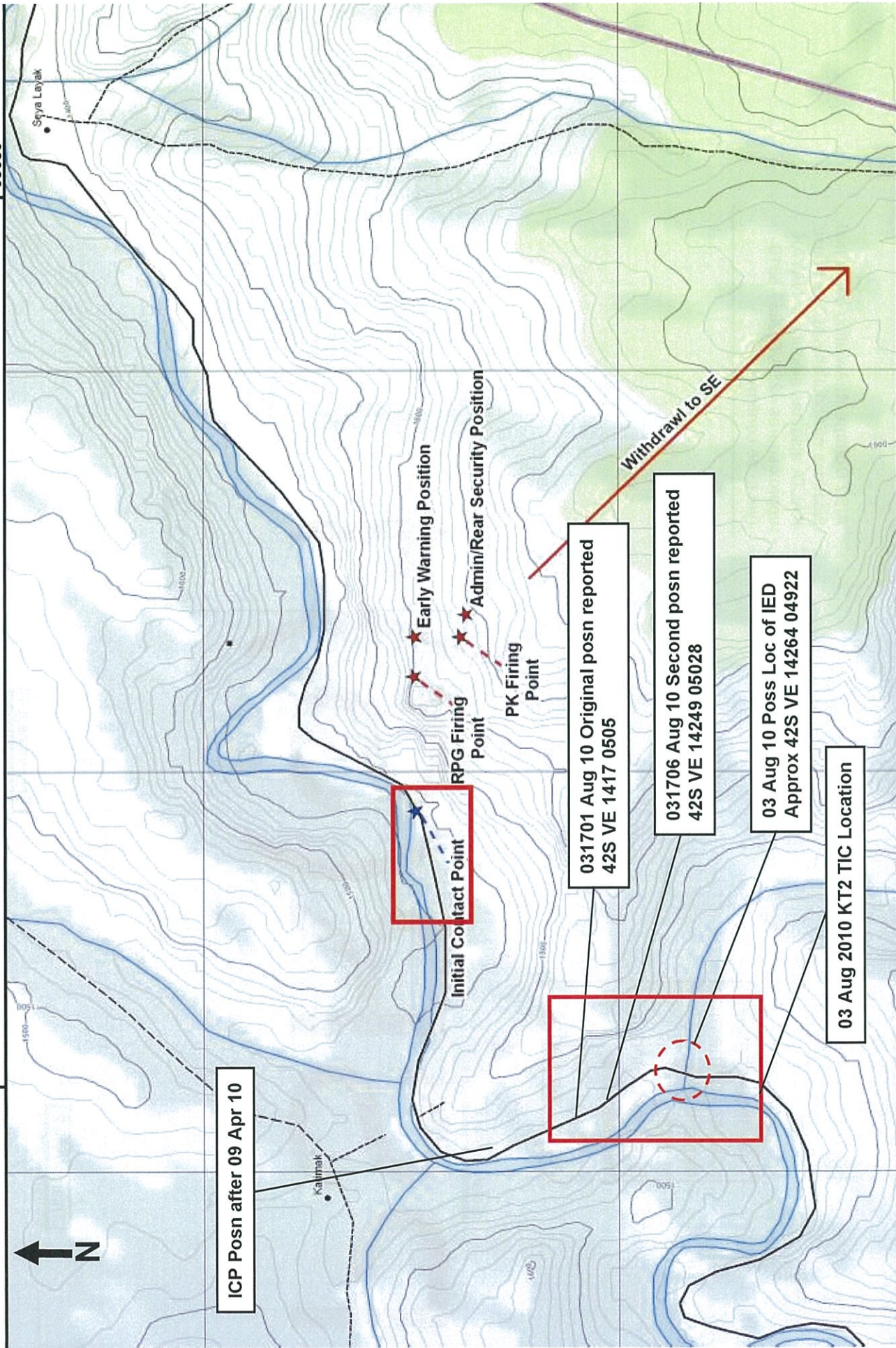
1706hrs Second posn reported
42S VE 14249 05028

1701hrs Original posn reported
42S VE 1417 0505



KT2 CONTACT IVO KARIMAK 09 Apr 10 Comparison

Target No. Nil
MGRS 42 SVE 14177
05080



This slide contains imagery of the area described in the heading. It has been redacted because it is derived from partner platforms

A/S2 Comment: Awaiting confirmed locations of Abdullah KALTAs house. KALTA also has a house in NAYAK approx figures 42S VD 2657 8810 (yet to be confirmed)

Enlargement 4

PSR(S)1

Enlargement 3

Enlargement 2

Enlargement 1



PSR(S)1

This slide contains imagery of the area described in the heading. It has been redacted because it is derived from partner platforms

PSR(S)1

This slide contains imagery of the area described in the heading. It has been redacted because it is derived from partner platforms

Enlargement 1 area

Possible LUP location, PSR(sen)1

PSR(S)1

This slide contains imagery of the area described in the heading. It has been redacted because it is derived from partner platforms

PSR(S)1

This slide contains imagery of the area described in the heading. It has been redacted because it is derived from partner platforms



PSR(S) 1

This slide contains imagery of the area described in the heading. It has been redacted because it is derived from partner platforms



PSR(S)1

This slide contains imagery of the area described in the heading. It has been redacted because it is derived from partner platforms