



**NEW ZEALAND PROVINCIAL RECONSTRUCTION TEAM
BAMYAN, AFGHANISTAN**

Kiwi Base, Bamyan Airfield, Bamyan, AFGHANISTAN
Telephone: +PSR(sen)1, PSR(IC)3 Email: PSR(sen)1, PSR(IC)3
(Unclas)

4 AUG 2010

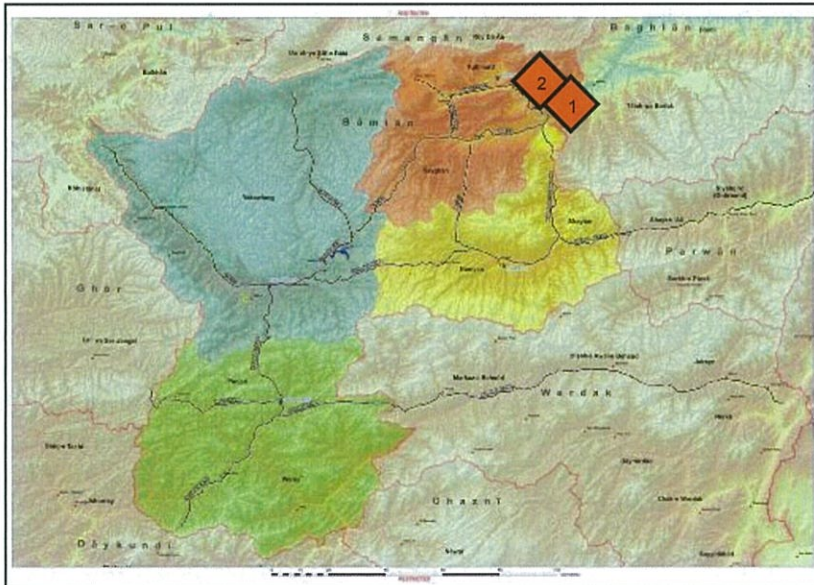
NZPRT BAMYAN DAILY INTSUM 216/10

Period: 0301830D AUG 10 - 041830D AUG 10

Executive Summary

KAHMARD: Further reporting on KT2 in contact IVO KARIMAK (NZPRT PIR 1; COM JFNZ PIR 2).

KAHMARD: PSR(sen)1 and PSR(sen)1 from BAJGA threatened people in BAJGA 20 days ago (NZPRT PIR 1; COM JFNZ PIR 2).



Area of Interest

1. NSTR.

Area of Operation

GOVERNANCE

2. NSTR.

DEVELOPMENT

3. NSTR.

SECURITY

4. ~~(S//REL ISAF, NATO)~~ ¹ **KAHMARD:** On 031633 Aug 10, KT2 was ambushed in a complex INS attack IVO KARIMAK (GR 42S VE 14264 04922). The attack was initiated by CWIED targeting the lead HMMWV and followed up by RPGs and SAF. Further details are subject to ongoing site exploitation. The INS group responsible is reported to consist of 15 INS under command of Maulawis NEMATULLAH, KALTA and ^{PSR(sen)1}. This group may be planning to attack ISH PESTA CP tonight (4/5 AUG 10). The group may be located in KALTA's house in GARDENDEH PA'IN (GR 42S VD 14775 95151). **NZPRT S2 COMMENT:** Further clarification of events at the ambush site will come after completion of TSE. The involvement of ^{PSR(sen)1} in spreading disinformation prior to this attack cannot be discounted. A second ('Southern Group') may be active IVO KHARZAR PASS (GR 42S VD 2675) under Qari MIRAJ. There may be an intent to attack SHIBAR DC and target KT Patrols in SHIBAR and SHIKARI. **END COMMENT.**

~~(S//REL ISAF, NATO)~~ ² **KAHMARD:** ^{PSR(sen)1} from BAJGA and ^{PSR(sen)1} from ANDAB approached FPB ROMERO stating that ^{PSR(sen)1} and ^{PSR(sen)1} from BAJGA had threatened LNs 20 days. They were warned against passing information to NZPRT. LNs in BAJGA did not report these threats to the ANP ^{PSR(S)1}. ^{PSR(sen)1} and ^{PSR(sen)1} also reported unusual movement in the mountains IVO TANGY MOIK village between 2200 Hrs and 0100 Hrs 3/4 AUG 10. **NZPRT S2 COMMENT:** It is unknown at this stage whether this report relates to the 3 Aug attack. ANP did not pass on this information to NZPRT. Further investigation will be conducted. **END COMMENT.**

72 Hour Assessment:

5. **MLCOA:** Locally based INS maintain some influence in their *safe-haven* in southern TALA-WA-BARFAK. It remains possible that INS will deploy further IEDs against ANSF, CF and international actors between T-W-B and CP G1. An attack on ANP CP ISH PESHTA may be imminent. A kidnapping attempt of Chinese mining personnel at ISH PESTA is possible. Given recent cooperation with PARWAN-based TB, INS activity in south SHIBAR is possible.

6. **MDCOA:** A complex attack with IED supported by RPG/SAF targeting ANP/CF patrols along MSR in NE AO BAMYAN or south SHIBAR remains possible.

DRAFTED BY:

^{PSR(sen)1, PSR(IC)3}

RELEASED BY:

^{PSR(sen)1, PSR(IC)3}

INT OP

S2

¹ ^{PSR(sen)1} a reported TB Comd and son of ^{PSR(sen)1} from BAJGA village, was reported in Jul 09 to be spreading anti PRT sentiment.

Priority Intelligence Requirements

- a. PIR 1. What are the kinetic threats to stability within BAMYAN Province?
- b. PIR 2. What are the non-kinetic influences that have the potential to create instability within BAMYAN Province?

c. **PSR(S)2, PSR(S)3**

IR concerning local sentiment towards NZDF and Afghan Government

- d.
- e.

LEVELS OF CONFIDENCE	
CONFIRMED	Approximately 95 per cent or greater
PROBABLE	Approximately 75 per cent or greater
LIKELY	Approximately 50 per cent or greater
POSSIBLE	Approximately 15 per cent or greater
DOUBTFUL	Approximately 14 per cent or less

Distribution:

PSR(sen)1, PSR(IC)3, PSR(S)1

List of NZDF and partner entities in receipt of Intsum

PSR(sen)1, PSR(IC)3, PSR(S)1