



**NEW ZEALAND PROVINCIAL RECONSTRUCTION TEAM  
BAMYAN, AFGHANISTAN**

Kiwi Base, Bamyan Airfield, Bamyan, AFGHANISTAN  
Telephone: +PSR(sen)1, PSR(IC)3 Email: PSR(sen)1, PSR(IC)3 (unclass)



**SUPINTREP 004/10 31 MAY 10 (GRAPHIC)  
INS ACTIVITY/ MOVEMENT IN TALA-WA-BARFAK 01- 31 MAY 2010**

**Introduction:**

The purpose of this document is to consolidate reporting provided by multiple elements on INS activity in the Al. IOT provide an updated assessment on the INS situation and threat to the NZ PRT.

**References:**

- NZPRT BAMYAN DAILY INTSUM 123
- NZPRT BAMYAN DAILY INTSUM 126
- NZPRT BAMYAN DAILY INTSUM 124
- NZPRT BAMYAN DAILY INTSUM 139
- NZPRT BAMYAN DAILY INTSUM 150
- NZPRT BAMYAN DAILY INTSUM 151
- NZPRT MEETING REPORT 03 MAY 10
- NZPRT MEETING REPORT 04 MAY 10
- NZPRT MEETING REPORT 05 MAY 10
- NZPRT MEETING REPORT 15 MAY 10
- NZPRT MEETING REPORT 31 MAY 10

- LEP REPORT 09 MAY 10
- LEP REPORT 12 MAY 10

**Drafter**  
PSR(sen)1, PSR(IC)3

**Releaser**  
PSR(sen)1, PSR(IC)3



#### 4 MAY 2010

1. Qari MUSA, Qari MIRAJ, Malawi NEMATULLAH and PSR(sen)1 with 40 to 50 TB in support. By day, TB patrol openly carrying wpns in groups ranging from 4, to 15 fighters. They focus on the main road between ANADARAH and BARFAK village.

By night they move to various houses in particular Qari MUSA houses in BARFAK and ANADARAH. The TB are armed with RPG, PK and AKs and are identifiable by black or white 'lungis' (turbans). Other wear pakols-like local people. They have their own motorcycles and commandeered other local vechs.

2. ANP soldiers at BAGHLAN ANP CP (GR 42S VE 18026 06505) sight a large INS group in the high ground, ANP withdraw to the adjacent BAMYAN ANP ISH PESHTA CP (GR 42S VE 17392 06394) and remain there.

#### 2 MAY 2010

3. Another large group of 30-40 INS led by Qari MUSA attacked the TALA Village ANP station and DSG office at 020750. The INS were forced to withdraw after locals armed themselves on the order of PSR(sen)1 and assisted the ANP who were running low on ammunition. Three ANP were reported KIA. 1-4 INS were reported killed and three captured. The BAGHLAN ANP ISH PESHTA CP was abandoned by the INS during the day (NFI). ANP have regained control of the BARFAK District Centre. The current disposition of the INS is unknown.

#### 3 MAY 2010

4. Qari MUSA and other INS rpt active in BARFAK BAZAAR, JAMAY BARFEK Mosque (NFI) and DAHANE ZAW, but the main concentration are at PSR(sen)1 house next to the mosque in BARFEK Village. Their intentions are unknown.

5. PSR(sen)1 detail at the camp stood too in the evening as a local reported 40-50 TB in the high ground, 800m from the LBG compound gate.

#### 4 MAY 2010

6. 40 TB under the command of PSR(sen)1 and Qari MUSA moved from TWB to TIRGIRAN. The TB is meeting in TIRGIRAN to discuss their next COA. Four unknown PAKISTANI also travelled with the group.

7. Malawi NEMATULLAH rptd in GHANDAK. INS are doing an IO campaign to the LN against CFs

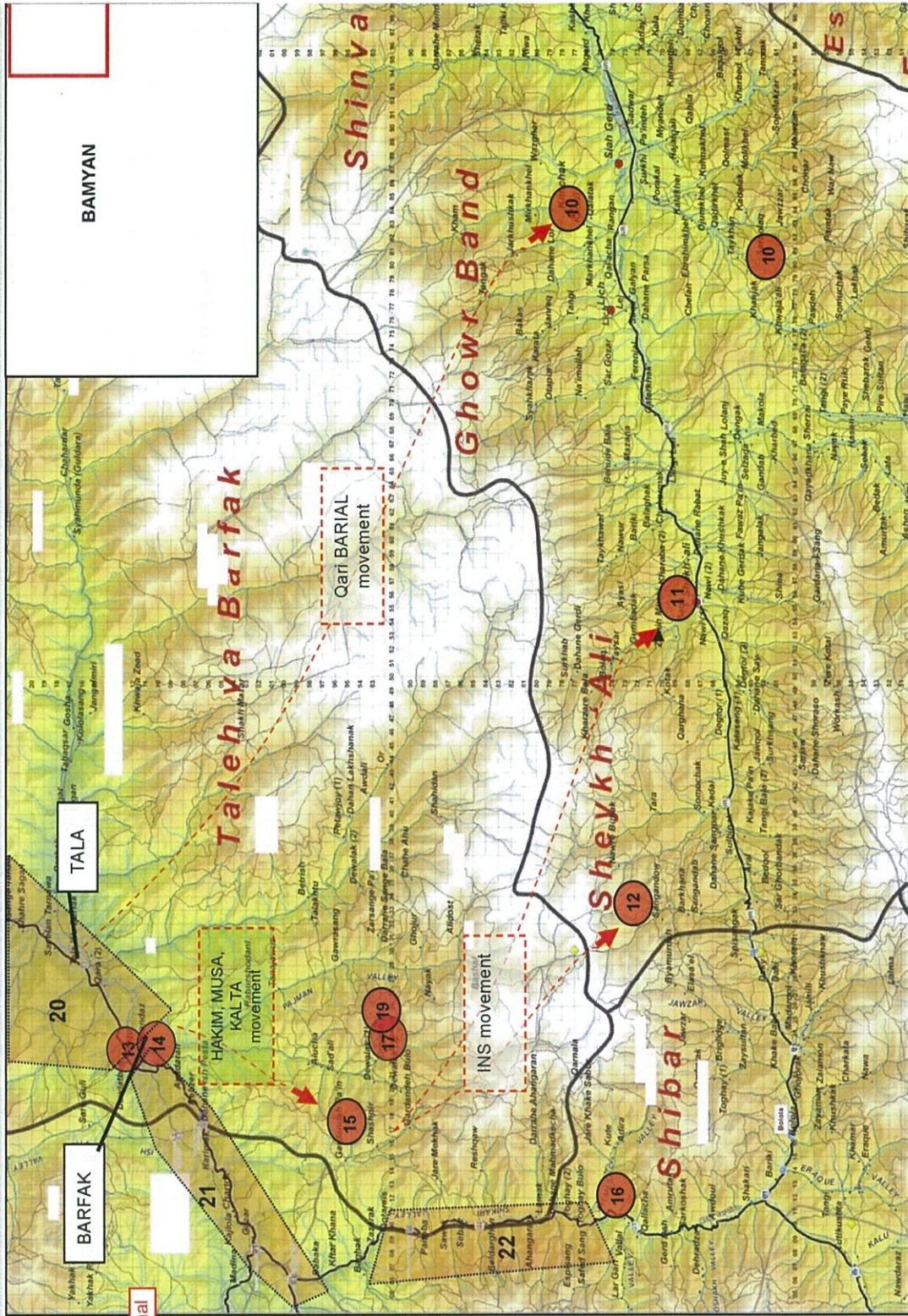
#### 5 MAY 2010

8. PSR(sen)1 had Taliban fighters in the Rishqual Valley and they could attack at any time. PSR(sen)1 that four (4) Pakistani persons were observed in Bar Fak Village. PSR(sen)1 stated that these persons were either commanders or suicide bombers. PSR(sen)1 was also having all attacks videotaped

#### 6 MAY 2010

9. 20-30 TB in BAGHLAN opposite BAGHAK (GR 42S VD 112 930) at 051245DMay10. Source reports at least 10 were armed with AK-47s, PKMs, and RPGs.





**9 MAY 2010**  
**10. PSR(sen)1** BAGHLAN Province TB Shadow Governor. Three TB groups on the move via mountain foot tracks from T-W-B. The first group travelled from T-W-B to KHIM CHAQ <sup>PSR(sen)</sup> was ordered by External Intelligence Service) to conduct operations in PARWAN, KAPISA and BAMYAN Provinces. These operations are to include suicide bombings, kidnappings and conventional attacks against CF

**11.** The second from GARDEDEH to SHIK ALI.  
**12.** The third from GARDEDEH to SANG ANDOW Village.

Each group is comprised of ten to twenty five fighters.

**13. PSR(sen)1** was in BARFAK Village conducting a meeting at the ZEBBA Mosque with approximately thirty armed TB soldiers. TB were planning an attack and that they were armed and ready.

**10 MAY 2010**  
**14. PSR(sen)1** and approximately forty armed TB left BARFAK Village on the afternoon of 10 May. <sup>PSR(sen)1</sup> and his men were said to be enroute to GARDEDEH and TIGIRAN Villages. to stage for attacks. Primary target would be ANP CPs at ISH PESTA SANGPAR and DO-ABE).

**11 MAY 2010**  
**15.** A group of 40 TB under **PSR(sen)1** Qari MUSA, and Comd Abdullah KALTA reported in the mountains IVO GARDEDEH (GR 42S VD 147 951). They plan to attack an ANP CP in the SHIKARI VALLEY.

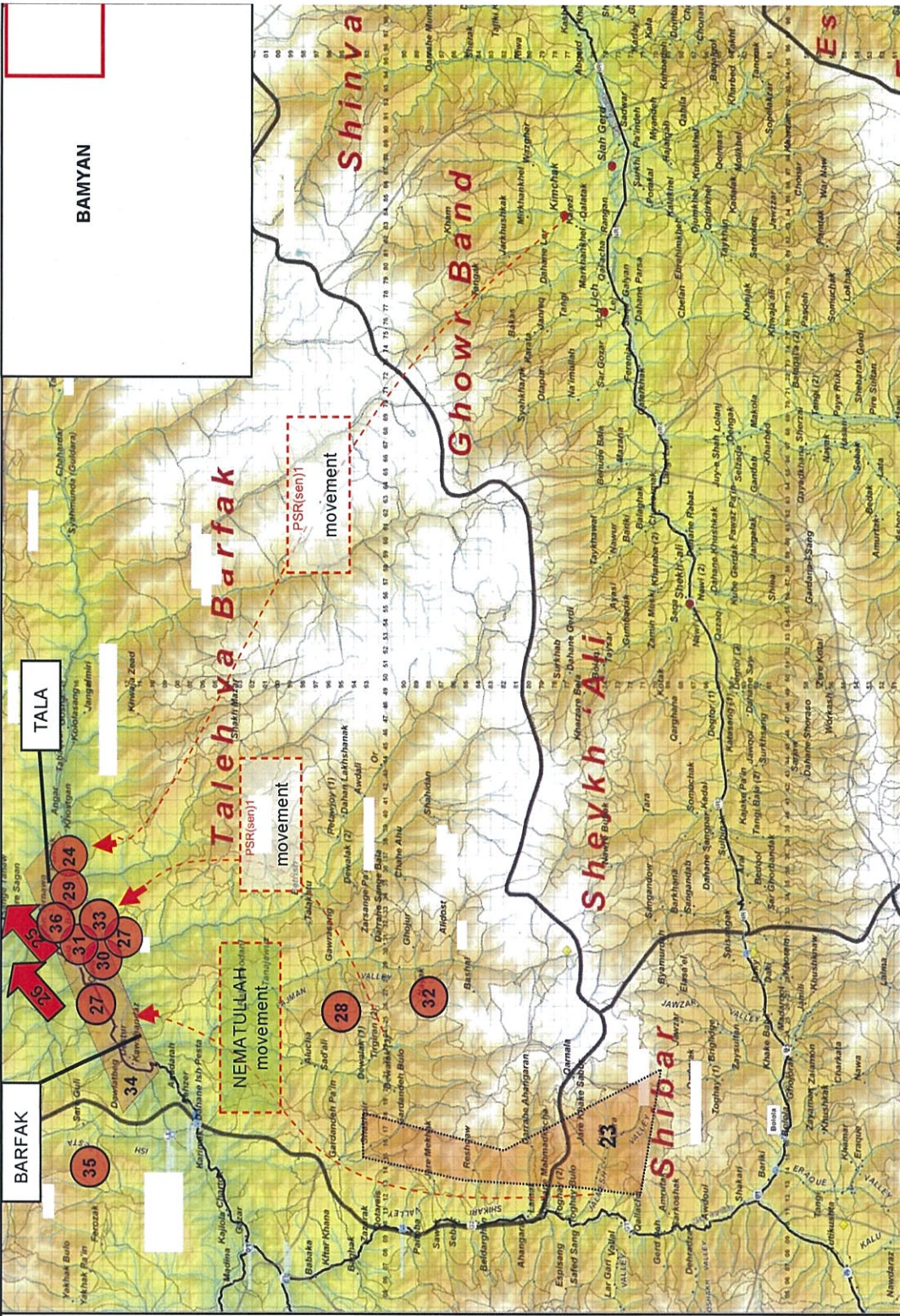
**12 MAY 2010**  
**16.** 5 to 6 TB under Qari MUSA were rpt'd operating in the hills IVO JELMESH and GHANDAK. The routine is that they move into the hills during the day and then move into the villages to stay at night. The have explosives (IED) RPG's and a Machine gun.

**13 MAY 2010**  
**17.** <sup>PSR(sen)1</sup> Reported to be in TIRGIRAN and plans to attack the **PSR(S)** mining camp. Future targets would be DO-ABE and SANGPAR. <sup>PSR(sen)1</sup> goals were to attack ANP CPs, Capture Foreign Hostages, and attack CF and ANSF.

**14 MAY 2010**  
**19. PSR(sen)1** operating both the American presence and the 'robbing' of mines by the **PSR(S)** at the mosque in TIRGIRAN

**15 MAY 2010**  
**20. PSR(sen)1** operating from TWB north to KANON Valley (phonetic).  
**21.** Qari MUSA-operating from TWB to SANGPAR. Includes DO ABE, ISH PESTA, DAHANE SAYGHAN.  
**22.** Malawi NEMATULLAH-operating from SANGPAR to SHIBAR PASS.





- 15 MAY 2010**
- 23.** TB rpt'd in the mountains IVO GARDENDEH, RESHQAW and JALMESH. Locals asked them to leave BARFAK. Planning suicide attacks, specifically on BAMIAN town. Suicide vests and IEDs.
- 16 MAY 2010**
- 24.** 35 TB observed on the high ground IVO ASHRAF Village last night. The group is under the leadership of **PSR(sen)1**
- 25.** **PSR(sen)1** led approx 50 TB fighters east to the DAHANE GHORI Valley to reinforce TBs that have been fighting the BAGHLAN Government.
- 26.** A group of TB travelled at night to TURMUSH (TB Trig Camp). TB visited the homes of B and ALLOWADIN. Homes are IVO T-W-B and DOSCHE border. **PSR(sen)1** is affiliated with HIG and ALLOWADIN is a TB Elder
- 17 MAY 2010**
- 27.** TB returned to BARFAK and TALA Villages. 70 armed TB in this area under the command of Malawi NEMATULLAH. TB go to TALA Village during the day and return to BARFAK in the evening.
- 28.** 100 to 130 armed TB rpt in TIRGIRAN Village and the PAJMAN Valley. TB leader **PSR(sen)1** is reported to have distributed money to persons in T-W-B District, with a portion of this money specifically going to TIRGIRAN Village and the PAJMAN Valley
- 29.** **PSR(sen)1** rpt conducting teaching and recruiting in the T-W-B area. Uncertain as to how successful he has been with his recruiting efforts. **PSR(sen)1** was rpt with a group of 30 TB.
- 30.** Qari MUSA sighted in a TALA Village.
- 18 MAY 2010**
- 31.** TB leaders with 45 INS held a meeting at a mosque in MARQ Village. The purpose of the meeting was to encourage 200 locals to support the TB. The leaders were Qari MUSA, **PSR(sen)1** and Malawi NEMATULLAH
- 32.** 30 Taliban in DAHANE NAYAK Village this is the same group that conducted an attack on the NZPRT patrol

- 33.** Phone service in TALA Village were cut as the TB set up base in a compound owned by **PSR(sen)1** 100 armed TB operating and living at this base. Armed with AK-47 rifles, PK machineguns and RPGs. Base is comprised of one large mud house and one smaller guest house painted white, surrounded by a mud wall. The TB flag, described as solid white, is flying inside the compound. There are armed guards at the entrance and patrols around the base.
- 22 MAY 2010**
- 34.** Unk number of INS moved through BARFAK and TALA
- 26 MAY 2010**
- 35.** 10 armed men were entertained at the house of **PSR(sen)1** SAR-E BOLO GR 42S VE 16903 15920. The group, reportedly led by Mullah Abdullah KAL TA, were from KARAM ALI near BARFAK VILLAGE.
- 36.** **PSR(sen)1** rpt INS captured 3 x ANP in BARFAK (NFI). INS planned to secure TALA-WA-BARFAK as a 'firm base' before launching a campaign in BAMYAN Province. INS are moving freely around T-W-B without interference from the ANSF.



**27 MAY 2010**

**37.** DOSHI-BAMYAN road IVO SENPESTA RUINS (GR 42S VE 42589 32812), one ANP officer was kidnapped by TB (NFI).

**38.** Director of Education for T-W-B has been kidnapped by TB at DAHANE MARQ (GR 42S VE 29219 14667). The kidnapping was not political and

could be a personal feud. 300 local elders planned to talk to TB leaders to secure the release of the Director of Education.

Reported TB leaders in the area are:

- PSR(sen)1
- Qari MUSA;
- PSR(sen)1
- PSR(sen)1
- PSR(sen)1
- Qari MIRAJ.

Reported that TB elements are moving around all the time. Locations include:

- DAHANE ANARA (NFI);
- ASHRAF Valley (GR 42S VE 22 18);
- TURMUSH Valley (GR 42S VE 35 31);
- MARAQ (near TALA) and
- GARAB (NFI).

later reported that TB had now released the Director of Education (NFI).

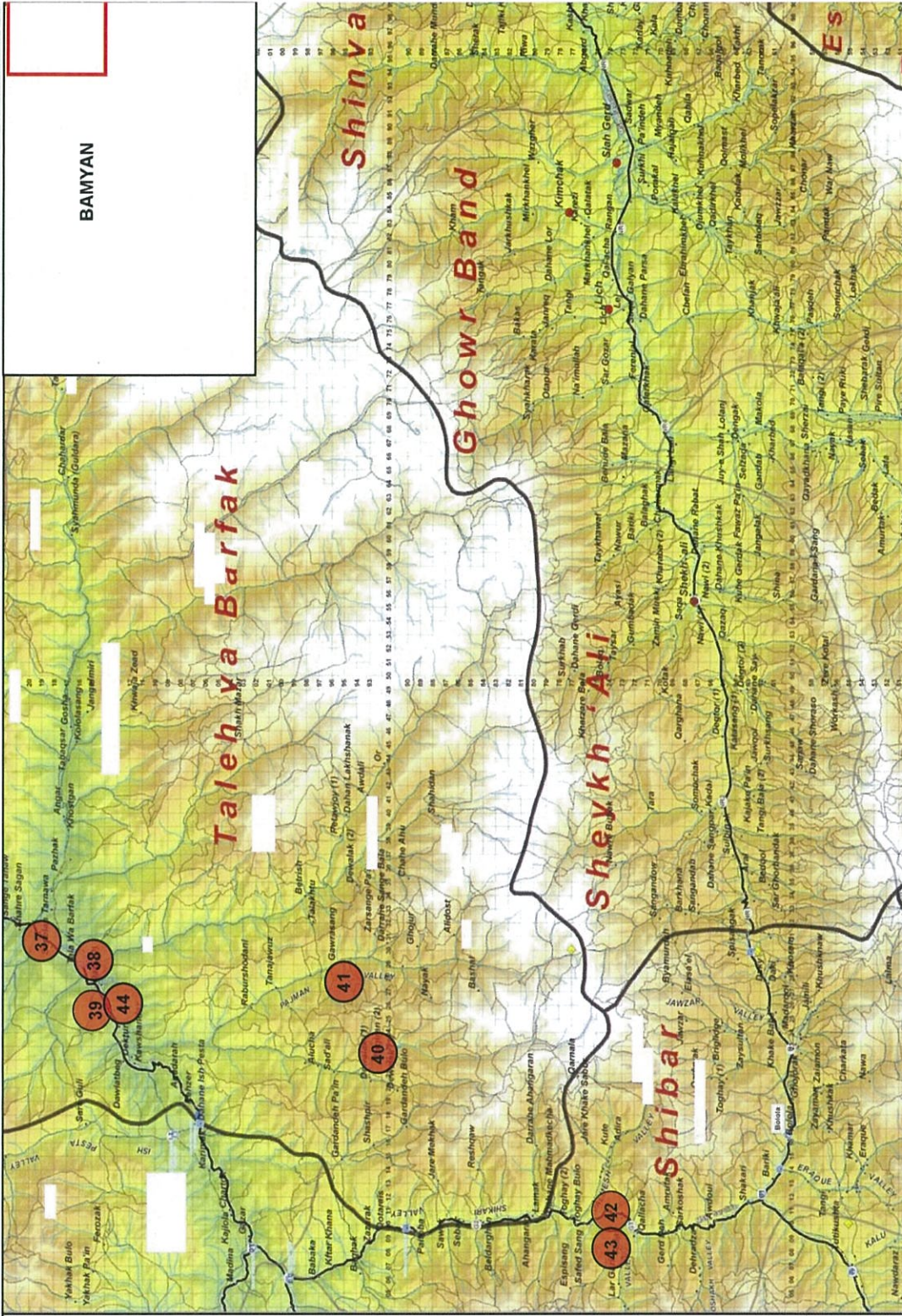
**28 MAY 2010**

**39.** Six armed TB on motorcycles passed the LBG camp near TALA (GR 42S VE 25650 13755) heading towards BARFAK Village. The sighting occurred at 1100hrs yesterday. LBG were able to positively identify three known TB operators who live locally:

- PSR(sen)1
- 
- 

**29 MAY 2010**

**40.** Two groups of INS have been seen recently in TIRGIRAN (GR 42S 23061 91545) and the PAJAMAN Valley (GR 42S VD 27 99). The TIRGIRAN group is reportedly under PSR(sen)1 while the other is under Qari MUSA.



**41.** cache provider PSR(sen)1 reports that 50-60 TB are currently in TIRGIRAN and PAJAMAN Valley, the leaders are Qari MUSA, PSR(sen)1 also reports TB are currently buying new and old munitions, with the old munitions being used to make IEDs (NFI).

**42.** PSR(sen)1 is threatening the people of GHANDAK (GR 42S VD 09169 72012) in the mosques into not supporting GIROA/CF. The report states that while PSR(sen)1 is actively disliked by the majority of people in GHANDAK, a small group of locals support him. He also moves around with an entourage he brought with him from PAKISTAN.

**43.** Commander PSR(sen)1 is possibly the replacement of PSR(sen)1 has recently returned from PAKISTAN and is reported to have met with PSR(sen)1 has reportedly returned to GHANDAK.

**44.** 25 armed men, believed to be AAF, were seen on the road in front of the LBG camp at 29 1930D May 10. They were reported to have stopped, conducted prayers, then split into two groups: one heading to TALA Village, the other to BARFAK Bazaar



## 29 MAY 2010

45. large number of TB, assessed at up to 120 persons, set up a roadblock on 29 May 10 (NFI) along the BAMYAN-DOSHI Road IVO TORMUSH Valley (GR 42S VE 35 31). They were stopping vehicles and conducting checks on passengers. The report stated that the INS were looking for ANP and other government employees.

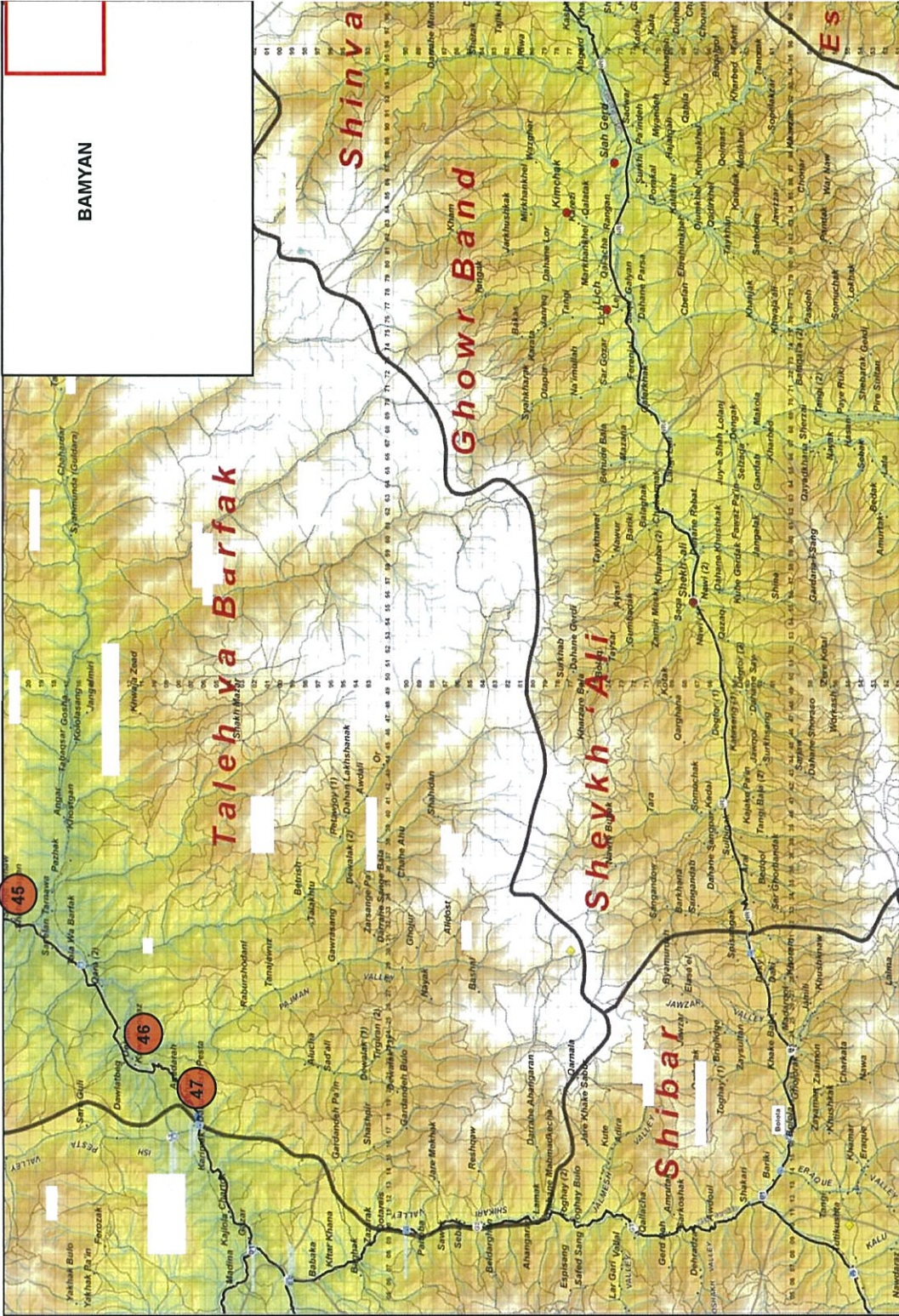
## 31 MAY 2010

46. 40 TB fighters in the JAMAE Mosque (42S VE 22500 11750) in BARFAK. They stay at the mosque during the day and have made numerous threats to ANP **PSR(sen)1**. At night, all 40 fighters move out of the mosque and patrol as one group. They move to unknown locations and stay at each for 1-2 hours. Most of the TB are local fighters. 4-5 TB are described as being from 'far away'. **PSR(sen)1** men have tried unsuccessfully to set up ambushes against these patrols. The TB continues to buy clothes, boots, weapons and munitions from the area. He states that the TB leaders are:

- Qari MUSA (JPEL Target RTAF 1861),
- Malawi NEMATULLAH and
- **PSR(sen)1**

Local population do not support the TB, although several people are assisting the TB. LN support is growing for the TB as their presence in the area increases. Fighters arrive daily from Central and Northern BAGHLAN. He estimates that a further 100-200 TB will arrive from 'the north' be 'the end of the week' (4 June 10). LN express dissatisfaction at the lack of GIROA response and want the TB to be moved from the area by force if necessary. **PSR(sen)1** has requested help from ANP BAGHLAN and the government, but has received none. His ANP soldiers are currently providing their own food. He also expressed concern about running out of ammunition.

**PSR(sen)1** clarified a previous report concerning the recently reported kidnapping of the Director of Education. The director was not kidnapped, but was 'held' by a tribal/village group who had a disagreement with him. The group wanted to hand him over to the TB to teach him a lesson. He was soon released after local elders intervened.



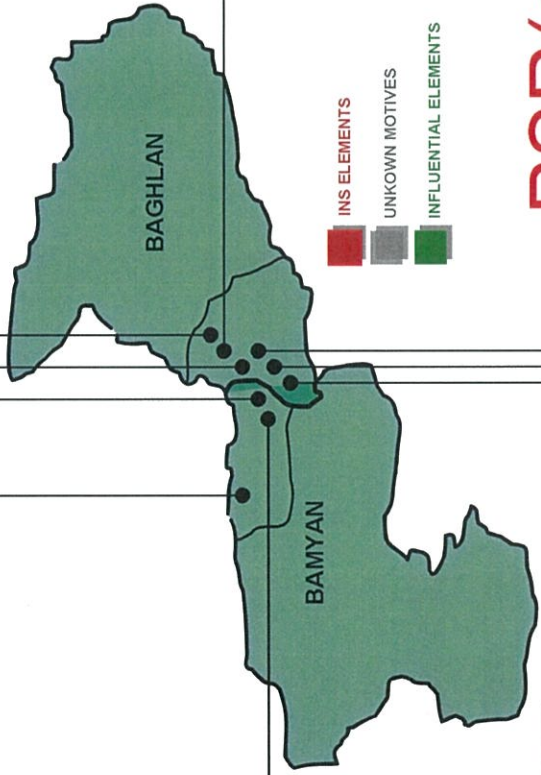
47. 25 Armed TB reported heading towards ISH PESTA CP. Further reporting TB sighted at Qari MARIJS house IVO ANADARAH. 12 TB inside and eight TB outside the house.



SEYA LAYAK / ISH PESTA  
ANADARAH  
**PSR(sen)1**

**PSR(sen)1**

RU-YE-SANG  
**PSR(sen)1**



DO-ABE /  
DASTE SAFED

**PSR(sen)1**

**PSR(sen)1**

**PSR(sen)1**

RESQAW

TURMUSH (Trg Camp)

JPEL RTAF1861

T-W-B



PSR(sen)1

BAGHLAN

BAMYAN



Mullah  
ALLOWADIN  
**PSR(sen)1**

PSR(sen)1



**PSR(sen)1**



**PSR(sen)1**



Cmdr  
Abdullah  
KALTA  
**PSR(sen)1**

PSR(sen)1



**PSR(sen)1**



**PSR(sen)1**



PSR(sen)1



**PSR(sen)1**



**PSR(sen)1**

INS Houses:  
QM1 QARI MUSA 1 GR 42S VE 225 116  
QM2 QARI MUSA 2  
QMI QARI MIRAJ

PSR(sen)1, PSR(S)2, PSR(S)3

PSR(sen)1

---

Neutral pers Locs ▲  
PSR(sen)1, PSR(S)2, PSR(S)3

---

Positive pers Locs ▲  
PSR(sen)1, PSR(S)2, PSR(S)3

---

This slide shows locations identified by NZPRT Elements. Red symbolises known homes and safe houses for TB key leaders and follows. Grey are house of KL that are have undecided influence and likely to be “sitting on the fence” whether to what side they play, it is possible to influence these KL. Green are assessed as positive influential pers and have previously cooperated in providing information on AGE in BAMYAN/TALA-WA-BARFAK.

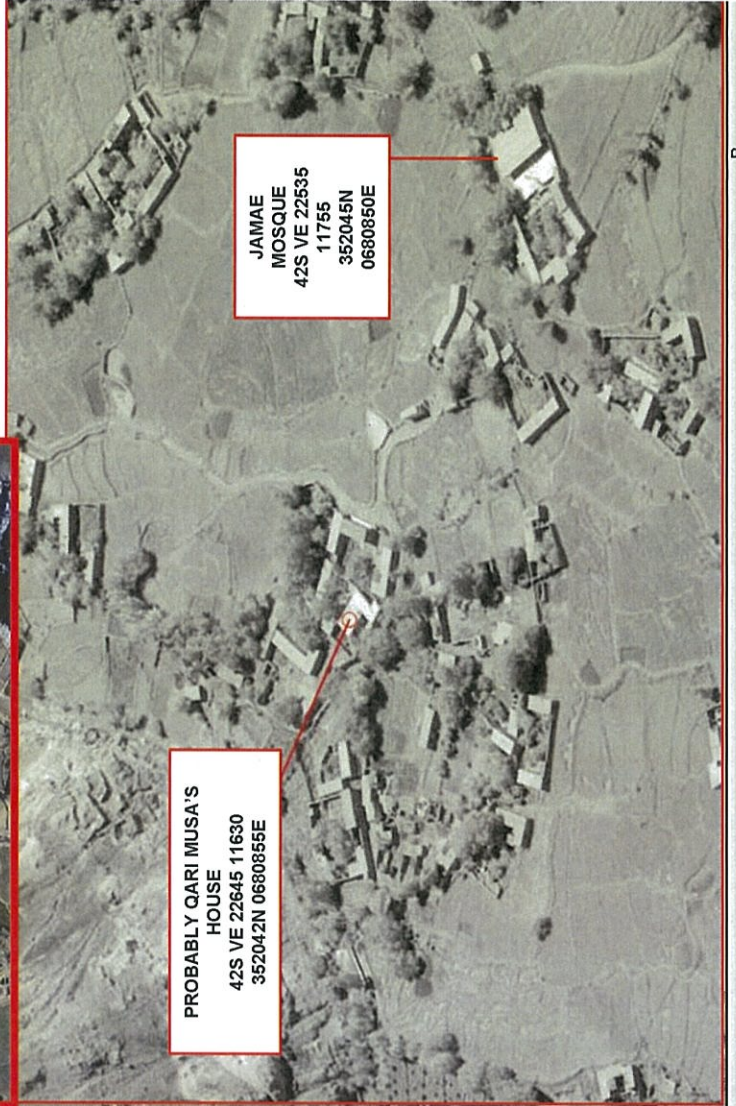
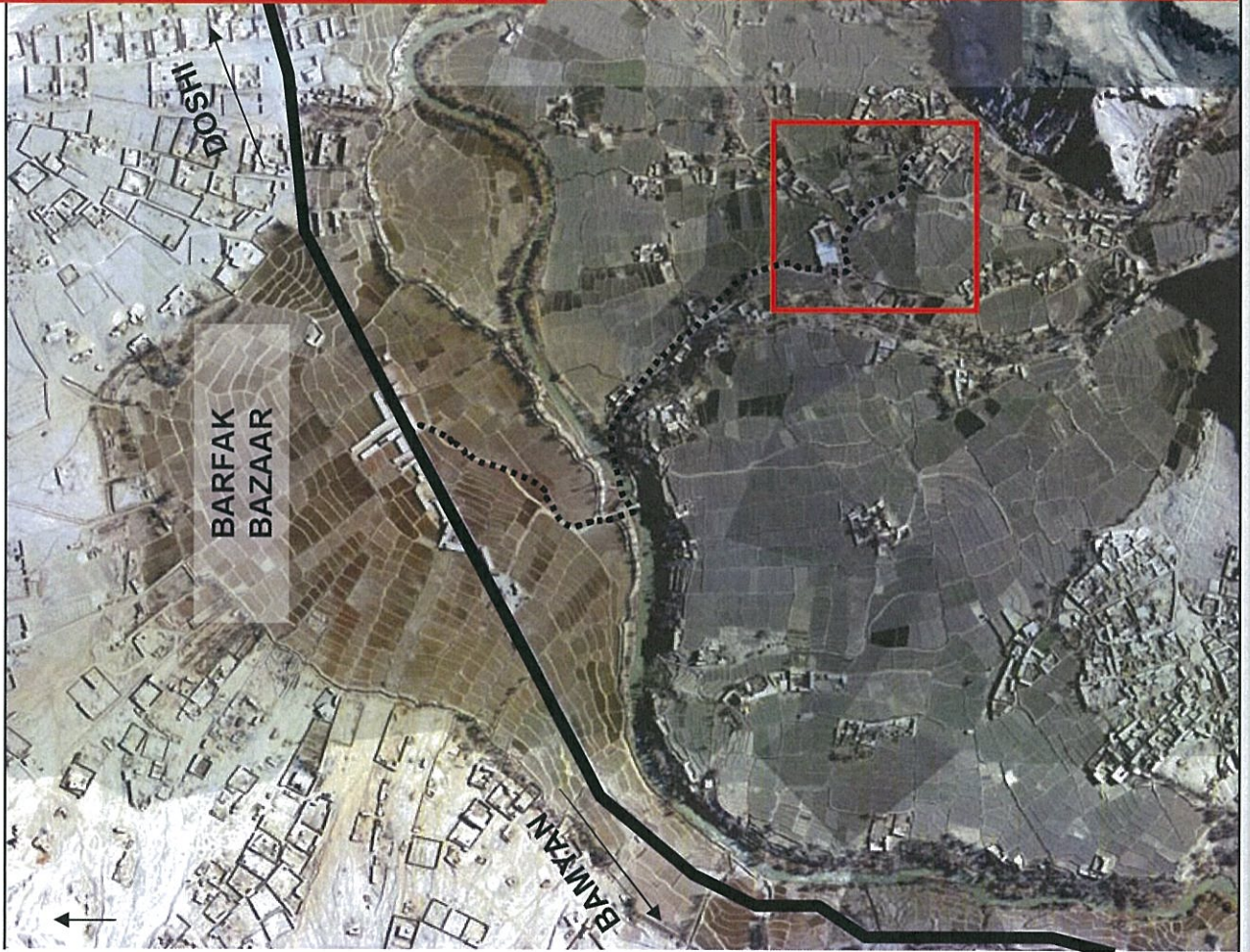


PSR(S)2, PSR(S)3

Partner imagery



# Assessed Qari MUSAs COMPOUND



PROBABLY QARI MUSA'S  
HOUSE  
42S VE 22645 11630  
352042N 0680855E

JAMAE  
MOSQUE  
42S VE 22535  
11755  
352045N  
0680850E









## 72 Hour Assessment:

- **MLCOA:** INS concentrate and attempt to gain local support to consolidate a *safe-haven* in TALA-WA-BARFAK. Local offensive action against ANP or international actors remains possible. Action may be timed to coincide with the 2-4 June KABUL CPJ.
- **MDCOA:** At a favourable time, INS may conduct a direct attack with RPG/SAF targeting one or more isolated ANP CPs to draw responding ANP/CF patrols into IED Killing Areas. Executed by groups of 6-15 INS, the aim is to film the destruction of CF patrol in a complex attack.